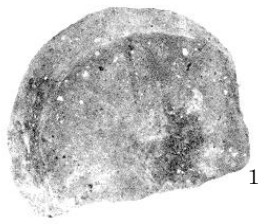
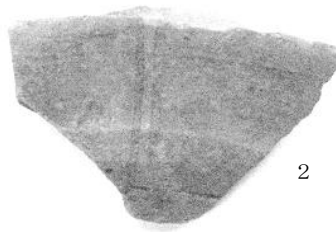


遺物 図 版





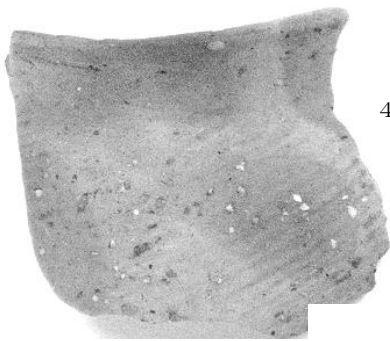
1



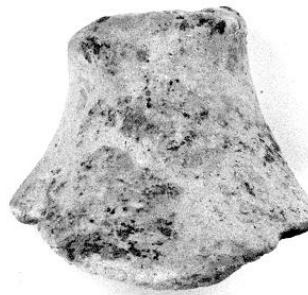
2



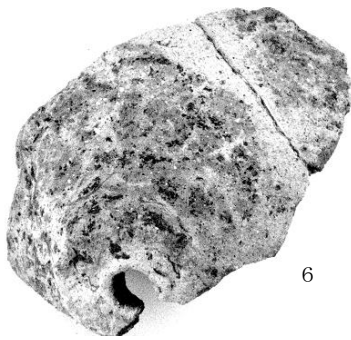
3



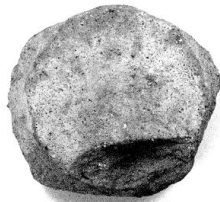
4



5



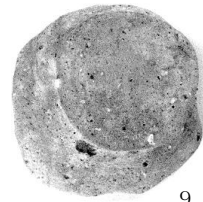
6



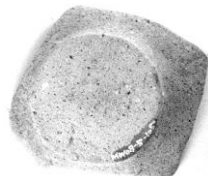
7



8



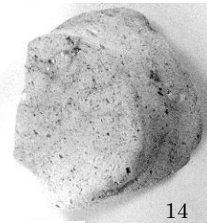
9



10



11



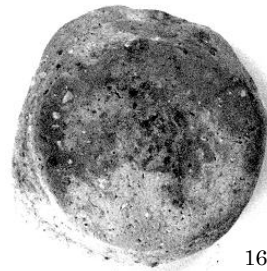
14



12



15



16



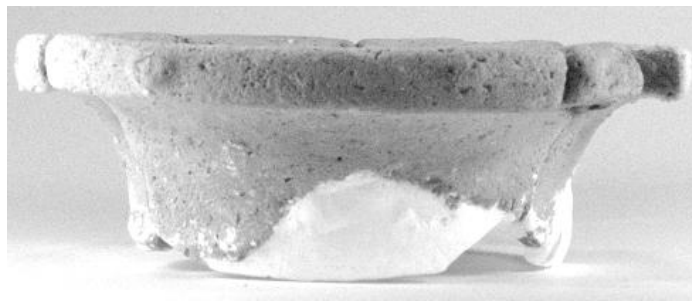
13



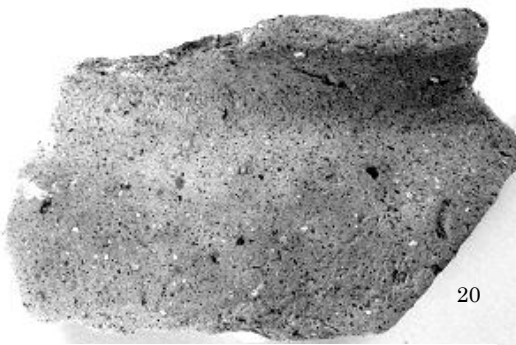
17



18



19



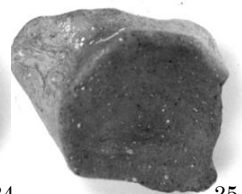
20



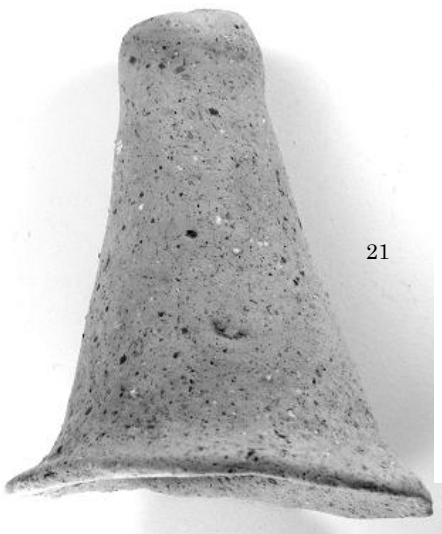
23



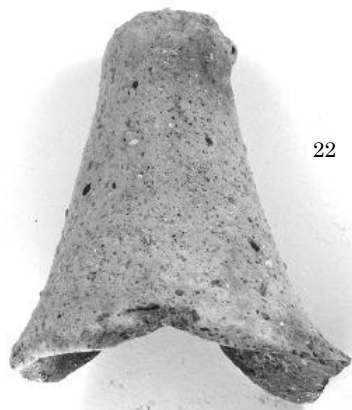
24



25



21



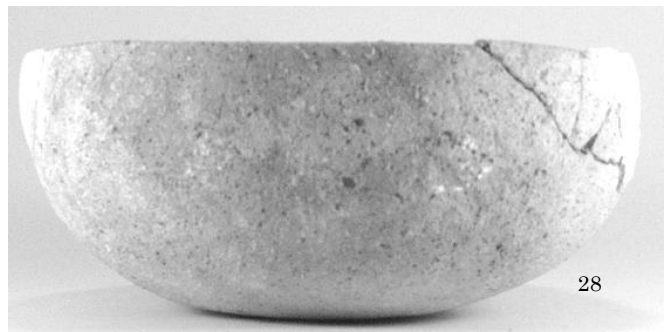
22



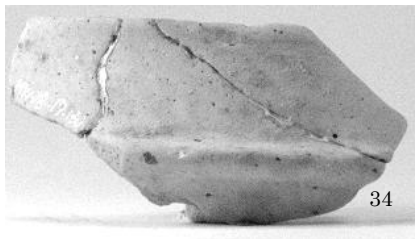
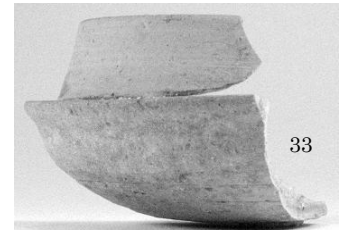
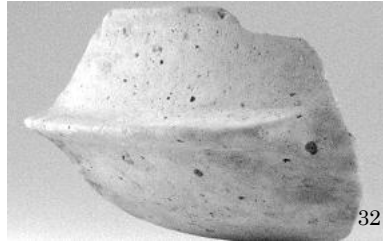
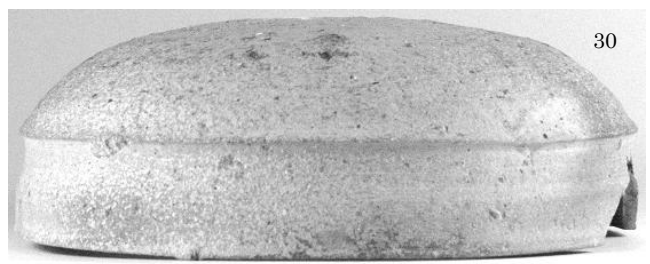
26

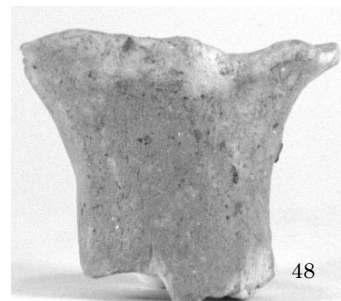


27

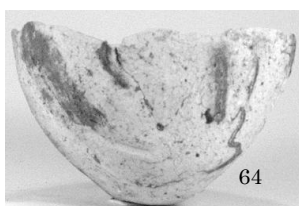
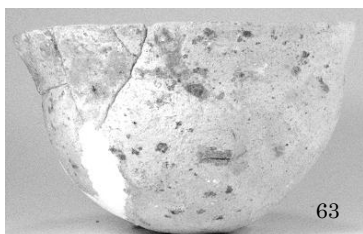
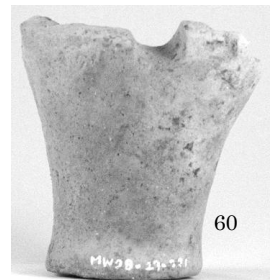
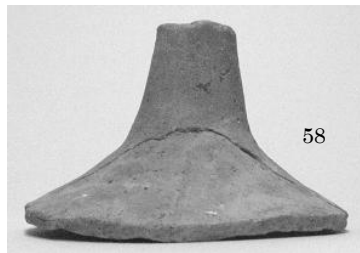
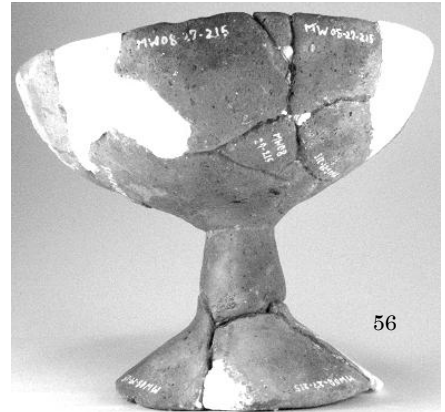


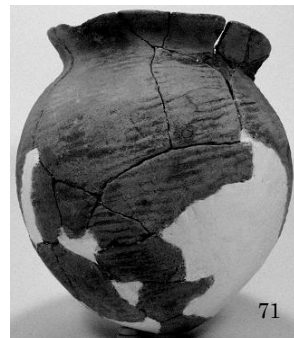
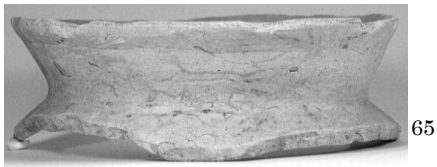
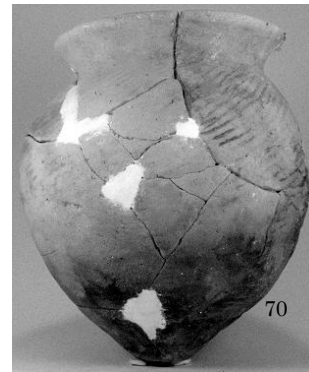
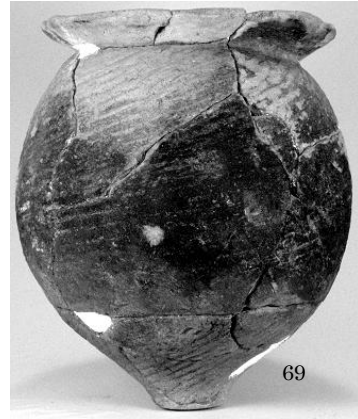
28

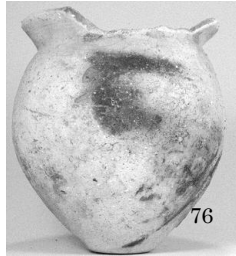
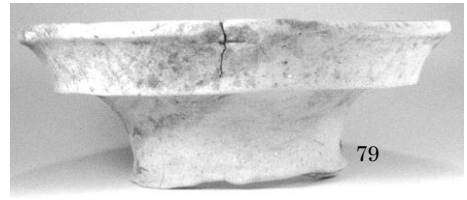
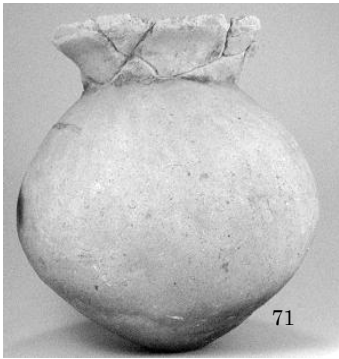












明和池遺跡確認調査報告書

吹田操車場跡地地区（仮称）の整備事業に伴う埋蔵文化財確認調査

平成 21（2009）年 2 月

発行 独立行政法人
鉄道建設・運輸施設整備支援機構

摂津市三島一丁目 1 番 1 号
摂津市教育委員会